

Engine output: **24.4 PS / 17.5 kW**

Machine weight: **2,590 kg**

For Earth, For Life

Kubota

KX027-4

KUBOTA MINI EXCAVATOR



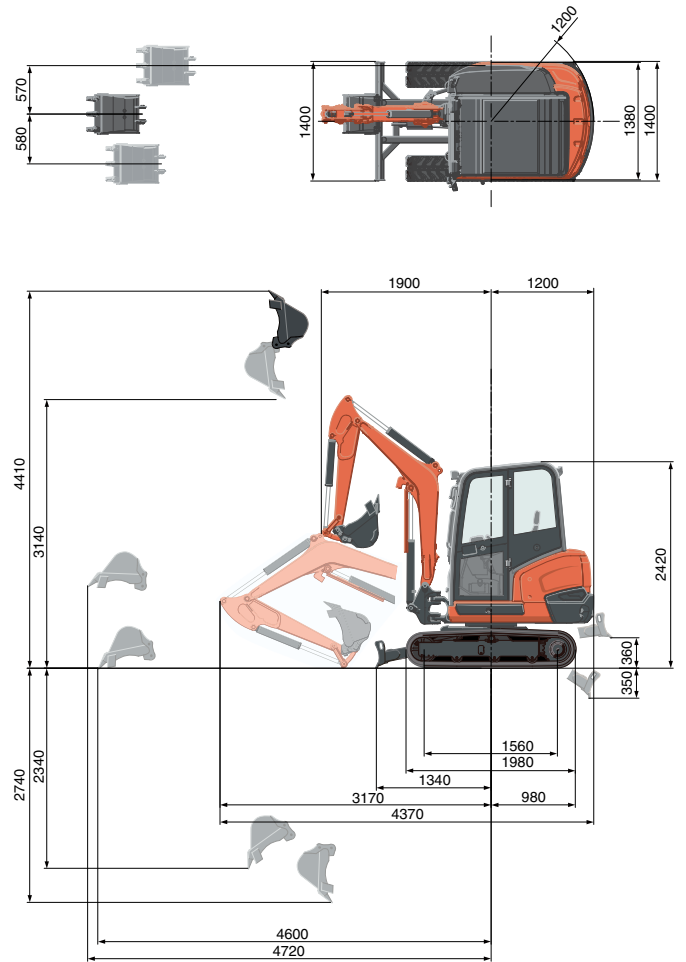
SPECIFICATIONS

Model		KX027-4		
Machine weight*1	Cabin / Canopy	kg	2590 / 2520	
Operating weight*2	Cabin / Canopy	kg	2665 / 2595	
Engine	Model		V1505-E4	
	Type		Water-cooled, diesel engine E-TVCS (Economical, ecological type)	
	Output ISO9249 NET	PS/rpm	24.4 / 2250	
		kW/rpm	17.5 / 2250	
	Number of cylinders		4	
	Bore × Stroke		mm 78 × 78.4	
	Displacement		cc 1498	
Dimensions	Overall width		mm 1400	
	Overall height (Cabin / Canopy)		mm 2420 / 2420	
	Overall length (1050mm arm / 1300mm arm)		mm 4340 / 4370	
	Ground clearance		mm 300	
	Dozer size (width × height)		mm 1400 × 300	
	Rubber shoe width		mm 300	
	Minimum front swivel radius with boom swing (left / right)		mm 1580 / 1850	
	Boom swing angle (left / right)		deg 77 / 57	
Hydraulic System	P1, P2	P1, P2	Variable displacement pump	
		Flow rate ℓ/min	29.3 × 2	
		Hydraulic pressure MPa (kgf/cm ²)	22.5 (230)	
	P3	P3	Gear type	
		Flow rate ℓ/min	18.0	
		Hydraulic pressure MPa (kgf/cm ²)	17.2 (175)	
	Auxiliary (AUX1)	Flow rate ℓ/min	47.3	
		Hydraulic pressure MPa (kgf/cm ²)	22.5 (230)	
	Auxiliary (AUX2)	Flow rate ℓ/min	18.0	
		Hydraulic pressure MPa (kgf/cm ²)	17.2 (175)	
	Max. digging force, arm		kN (kgf)	12.9 (1320)
	Max. digging force, bucket		kN (kgf)	22.1 (2250)
Hydraulic reservoir (tank / full)		ℓ	34 / 51	
Max. travelling Speed	Low	km/h	2.7	
	High	km/h	4.6	
Ground contact pressure	Cabin	kPa (kgf/cm ²)	24.7 (0.25)	
	Canopy	kPa (kgf/cm ²)	23.7 (0.24)	
Swivelling speed		rpm	9.8	
Fuel tank capacity		ℓ	48	

*1 With 55kg standard bucket, 1300mm arm, full tanks, rubber shoe.

*2 With 75kg operator, 1300mm arm, 55kg standard bucket, full tanks, rubber shoe.

WORKING RANGE



1300 mm arm
Unit: mm

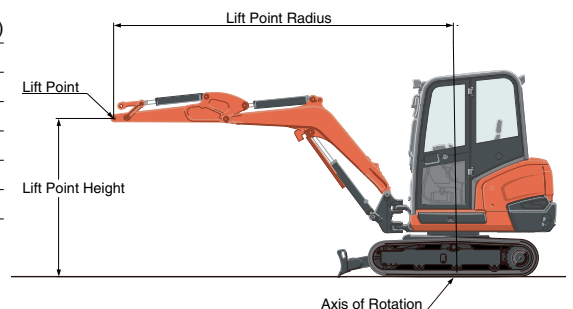
LIFTING CAPACITY

Cabin, rubber version

Lift Point Height	kN (ton)			
	Lifting point radius (2m)		Lifting point radius (max.)	
	Over-front (blade down)	Over-side	Over-front (blade down)	Over-side
1.5m	9.2 (0.94)	7.5 (0.77)	–	–
1.0m	12.3 (1.26)	7.0 (0.71)	5.0 (0.51)	2.6 (0.26)
0.5m	13.9 (1.42)	6.7 (0.68)	–	–
0m	14.1 (1.44)	6.6 (0.67)	–	–

*The lifting capacities are based on ISO 10567 and do not exceed 75% of the static tilt load of the machine or 87% of the hydraulic lifting capacities of the machine.

**The excavator bucket, hook, sling and other lifting accessories are not included on this table.



* Working ranges are with Kubota standard bucket, without quick coupler.
* Specifications are subject to change without notice for purpose of improvement.

★ All images shown are for brochure purposes only.

When operating the excavator, wear clothing and equipment in accordance with local legal and safety regulations.

KUBOTA EUROPE S.A.S.

19/25 rue Jules Vercrey
95101 Argenteuil Cedex France
Téléphone : (33) 01 34 26 34 34
Télécopieur : (33) 01 34 26 34 99

<http://www.kubota-eu.com>